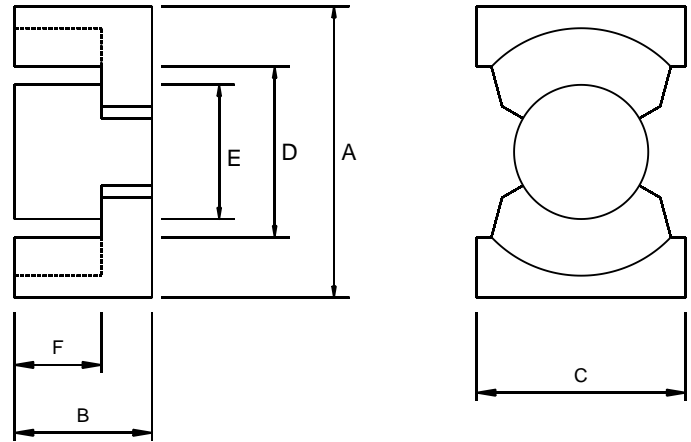


# PQ Cores



Application of PQ cores  
 Compact Transformers  
 Low distortion broadband transmission  
 at low signal  
 DC/DC Converters



## DIMENSIONS

| Type   | A(mm)        | B(mm)          | C(mm)        | D(mm)        | E (mm)       | F (mm)       |
|--------|--------------|----------------|--------------|--------------|--------------|--------------|
| PQ2020 | 21.3 ± 0.4   | 10.10 ± 0.1    | 14.00 ± 0.40 | 18.00 ± 0.40 | 8.80 ± 0.20  | 7.15 ± 0.20  |
| PQ2620 | 26.50 ± 0.45 | 10.075 ± 0.125 | 19.00 ± 0.45 | 22.50 ± 0.45 | 12.00 ± 0.20 | 5.75 ± 0.15  |
| PQ2625 | 26.50 ± 0.45 | 12.50 ± 0.25   | 19.00 ± 0.5  | 22.50 ± 0.45 | 12.00 ± 0.20 | 8.15 ± 0.25  |
| PQ3220 | 33.00 ± 0.50 | 10.55 ± 0.20   | 22.00 ± 0.5  | 27.50 ± 0.50 | 13.45 ± 0.25 | 6.05 ± 0.20  |
| PQ3230 | 33.00 ± 0.50 | 15.15 ± 0.15   | 22.00 ± 0.5  | 27.50 ± 0.50 | 13.50 ± 0.25 | 10.65 ± 0.20 |
| PQ3535 | 36.10 ± 0.60 | 17.35 ± 0.125  | 26.00 ± 0.5  | 32 ± 0.5     | 14.4 ± 0.25  | 12.5 ± 0.15  |
| PQ4040 | 41.5 ± 0.90  | 20.00 ± 0.15   | 28.00 ± 0.6  | 37.00 ± 0.60 | 14.90 ± 0.30 | 14.80 ± 0.20 |
| PQ5050 | 51.00 ± 0.70 | 25 ± 0.25      | 32.00 ± 0.6  | 44.00 ± 0.70 | 20.00 ± 0.35 | 18.05 ± 0.30 |

## EFFECTIVE PARAMETERS

| Type   | Wt / set<br>gm | Le<br>mm | Ae<br>mm <sup>2</sup> | Ve<br>mm <sup>3</sup> | AL<br>HP400 |
|--------|----------------|----------|-----------------------|-----------------------|-------------|
| PQ2020 | 14             | 45.7     | 62.6                  | 2850                  | 2800        |
| PQ2620 | 30.00          | 45.3     | 19.5                  | 472.0                 | 1600        |
| PQ2625 | 36.0           | 55.5     | 33.7                  | 999.0                 | 4450        |
| PQ322D | 43             | 56.7     | 170.0                 | 9639.0                | 6360        |
| PQ323D | 62             | 74.7     | 167.0                 | 12500                 | 4770        |
| PQ3535 | 80.0           | 87.9     | 196.0                 | 17228.0               | 5370        |
| PQ4040 | 95.0           | 101.9    | 201.0                 | 20482.0               | 4900        |
| PQ5050 | 195            | 113.0    | 328.0                 | 37100                 | 6300        |