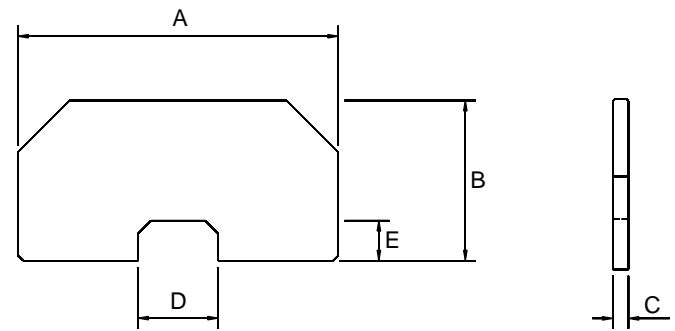
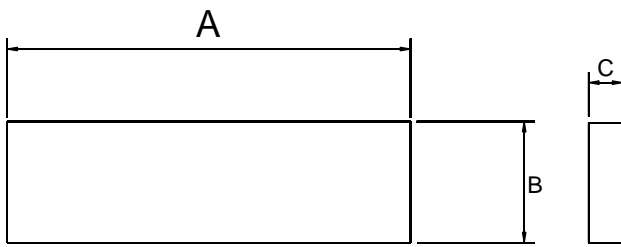


Ferrite Bar



Application of Ferrite Bars
 For Induction Heating
 For Tyre pressure and
 Keyless Entry application
 For EMI Absorption



DIMENSIONS

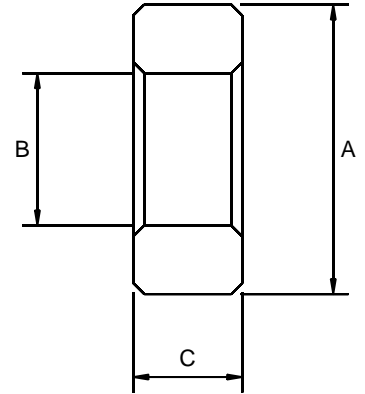
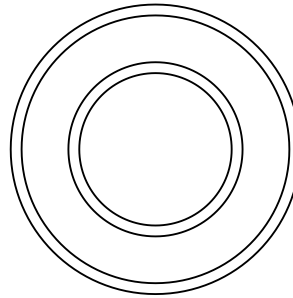
Type	A(mm)	B(mm)	C(mm)	D(mm)	E (mm)	WT/ set
Fbar 79/23/4	79 ± 0.8	23.5 ± 0.5	4 ± 0.2	---	---	36
Fbar 79/23/4	79 ± 0.8	19 ± 0.4	4 ± 0.2	---	---	29
Fbar 64/10/3	64.50 ± 0.70	9.80 ± 0.20	3.50 ± 0.50	---	---	10.00
Fbar 64/23/4	64.50 ± 0.70	23.50 ± 0.50	3.95 ± 0.20	---	---	29.00
Fbar 62/31/4	62.00 ± 0.60	31.00 ± 0.50	4.00 ± 0.20	---	---	37.50
Fbar 60/23/4	60.00 ± 0.50	23.00 ± 0.40	4.00 ± 0.20	---	---	27.00
Fbar 55/23/4	55.00 ± 1.00	23.50 ± 0.50	3.95 ± 0.20	---	---	25.00
Fbar 42/23/4	42.00 ± 0.80	23.50 ± 0.50	4.3 ± 2.0	---	---	20.5
Fbar 36/28/4	36.00 ± 0.60	28 ± 0.50	4.00 ± 0.20	---	---	20.00
Fbar 32/26/4	32.00 ± 0.50	26.00 ± 0.50	4.00 0.20	---	---	16.30

CFbar 88/44/4	88.00 ± 1.20	44.00 ± 0.60	4.00 ± 0.40	26.00 ± 0.60	13.00 ± 0.40	64.00
CFbar 62/31/4	62.00 ± 0.70	31.00 ± 0.50	4.00 ± 0.20	16.00 ± 0.30	8.00 ± 0.40	38.00

Toroid



Application of Toroid
 Common mode choke
 Interference suppression for line filter
 Signal transformer
 Highest permeability for volume
 Gapped Torroid



DIMENSIONS

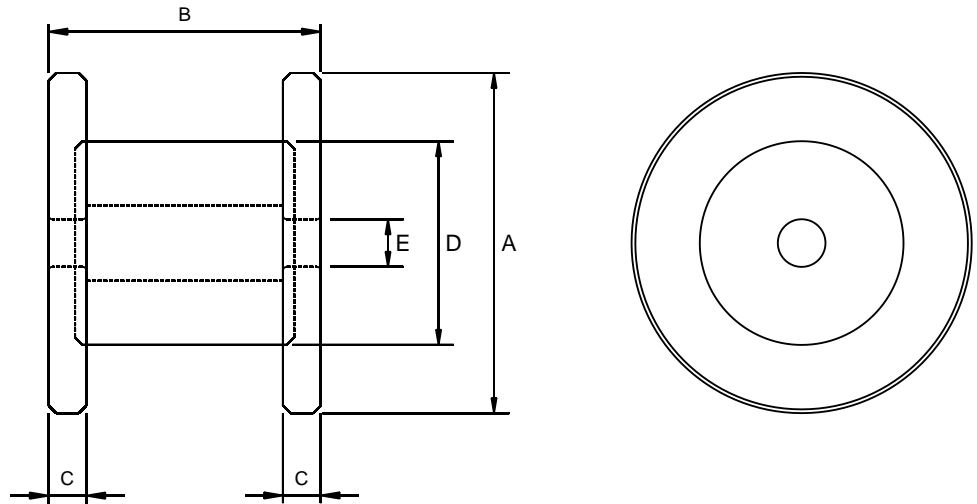
TYPE	ØA(mm)	ØB(mm)	C(mm) Cm ²	Le Cm ²	Ae Cm ²	Ve Cm ²	AL (± 25%) MSB-5S	AL ^{min} MGQ5C	Approx wt. gms/pc
T 10.0	10.0 ± 0.6	6.0 ± 0.2	3.0 ± 0.3	2.51	0.06	0.15	900	1200	0.72
T 10.0	10.0 ± 0.6	6.0 ± 0.2	4.0 ± 0.3	2.51	0.08	0.20	1200	1600	1.0
T 12.5	12.5 ± 0.4	7.5 ± 0.4	5.0 ± 0.3	3.14	0.13	0.39	2000	1870	1.92
T 13.3	13.3 ± 0.3	8.3 ± 0.3	5.2 ± 0.6	3.39	0.13	0.43	1345	1680	2.1
T 15.2	15.2 ± 0.5	7.6 ± 0.4	6.7 ± 0.3	3.58	0.25	0.91	---	3300	4.4
T 16.0	16.0 ± 0.4	10.0 ± 0.4	6.3 ± 0.3	4.08	0.19	0.77	1745	2000	3.7
T 17.5	17.5 ± 0.6	11.5 ± 0.4	8.0 ± 0.3	4.56	0.24	1.10	1980	2320	5.3
T 19.0	19.0 ± 0.5	11.0 ± 0.4	8.0 ± 0.3	4.71	0.32	1.51	2500	3400	7.3
T 21.0	21.0 ± 0.5	13.0 ± 0.3	12.5 ± 0.5	5.34	0.50	2.67	3530	4670	12.9
T 25.0	25.0 ± 0.6	15.0 ± 0.5	10.0 ± 0.3	6.02	0.49	2.95	3070	3750	14.50
T 25.0	25.0 ± 0.6	15.0 ± 0.5	12.0 ± 0.4	6.28	0.60	3.77	3600	4800	18.3
T 27.5	27.5 ± 0.6	14.5 ± 0.5	6.5 ± 0.3	6.60	0.42	2.79	2414	3000	13.5
T 28.0	28.5 ± 0.4	13.5 ± 0.4	16.7 ± 0.4	6.59	1.25	8.76	7000	9000	40.1
T 31.5	31.5 ± 1.0	19.0 ± 0.6	12.5 ± 0.3	7.93	0.78	6.19	3825	4687	29
T 32.0	32.0 ± 0.7	14.5 ± 0.5	7.0 ± 0.3	7.30	0.61	4.47	3166	3940	22
T 36.0	36.0 ± 1.0	23.0 ± 0.6	15.0 ± 0.4	9.26	0.97	9.03	3950	5230	44
T 45	45.0 ± 1.4	28.0 ± 0.8	11.0 ± 0.4	11.50	0.94	10.81	3080	3850	52
T 50	50.0 ± 1.0	30.0 ± 0.8	20.0 ± 0.3	12.56	2.00	25.12	6000	8000	121.8
T 58.3	58.3 ± 1.0	40.8 ± 0.8	17.6 ± 0.4	15.56	1.54	23.96	3700	---	116.2
T 63.0	63.0 ± 1.3	38 ± 0.8	25.0 ± 0.5	15.85	3.125	49.53	11760	9500	240

Note : Epoxy coated Toroids in above types also can be made available.

Drum Cores - OWD



Application of Small Rods
Crossover network
Filters

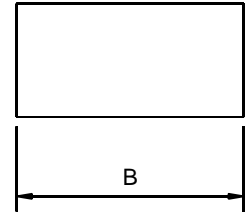
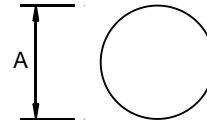


DIMENSIONS					
TYPE	A(mm)	B(mm)	C(mm)	D(mm)	E(mm)
OWD 22X15	22.00 ± 1.0	16.4 ± 1.5	3.20 ^{+0.6} _{-0.0}	12.00 ± 0.3	5.00 ^{+0.3} _{-0.0}
OWD 22X20	22.00 ± 1.0	21.4 ± 1.5	3.20 ^{+0.6} _{-0.0}	12.00 ± 0.3	5.00 ^{+0.3} _{-0.0}
OWD 28X20	28.00 ± 1.0	21.7 ± 1.5	3.85 ^{+0.6} _{-0.0}	16.90 ± 0.3	5.00 ^{+0.3} _{-0.0}
OWD 28X25	28.00 ± 1.0	26.70 ± 1.5	3.85 ^{+0.6} _{-0.0}	16.90 ± 0.3	5.00 ^{+0.3} _{-0.0}
OWD 35X25	35.00 ± 1.0	26.90 ± 1.5	4.45 ^{+0.6} _{-0.0}	21.00 ± 0.4	6.30 ^{+0.2} _{-0.0}
OWD 40X25	40.00 ± 1.0	26.00 ± 1.5	4.45 ^{+0.6} _{-0.0}	24.95 ± 0.5	6.30 ^{+0.2} _{-0.0}
OWD 40X35	45.00 ± 1.0	36.00 ± 1.5	5.00 ^{+0.6} _{-0.0}	26.95 ± 0.5	6.30 ^{+0.2} _{-0.0}
OWD 56X35	56.00 ± 2.5	35.00 ± 1.5	5.00 ^{+0.6} _{-0.0}	32.95 ± 0.5	6.30 ^{+0.2} _{-0.0}

Small Rods and Tube / Beads



Application of Small Rods
For Antennae
For Choke and Filter
For small Signal Transformers



DIMENSION

Type	OD(mm)	Length(mm)
3x21.5	3.00 ± 0.30	21.50 ± 0.50
3.18X19.05	3.18 ± 0.30	19.05 ± 0.50
3.2X19	3.20 ± 0.30	19.00 ± 0.50
4.76X25	4.76 ± 0.30	25.00 ± 0.50
4.76X50	4.76 ± 0.30	50.00 ± 0.50
5x20	5.00 ± 0.30	20.00 ± 0.50
5x100	5.00 ± 0.30	100 ± 0.50
6x20	6.00 ± 0.30	20 ± 0.50
6.35X50.8	6.35 ± 0.20	50.80 ± 0.50
6.35X38.1	6.35 ± 0.20	38.10 ± 0.50
6.35X64.5	6.35 ± 0.20	64.50 ± 0.50
6.35X85	6.35 ± 0.20	85.00 ± 0.50
6.36X43.75	6.35 ± 0.20	43.75 ± 0.50
6.35X19.05	6.35 ± 0.20	19.05 ± 0.50
7.9X38.1	7.90 ± 0.30	38.10 ± 0.50
9.5X76.2	9.50 ± 0.30	76.20 ± 0.50
9.75X125	9.75 ± 0.30	125.00 ± 0.75
12.7X200	12.70 ± 0.40	200.00 ± 1.00
12.7X150	12.70 ± 0.40	150.00 ± 1.00
12.7X97	12.70 ± 0.40	97.00 ± 0.50
12.7X101.6	12.70 ± 0.40	101.60 ± 0.50
12.7X76.2	12.70 ± 0.40	76.20 ± 0.50
12.7X50.8	12.70 ± 0.40	50.80 ± 0.50
15.9X50.8	15.90 ± 0.40	50.80 ± 0.50
19.05x38.1	19.05 ± 0.40	38.10 ± 1.00

DIMENSION

Type	OD(mm)	ID(mm)	Length(mm)
4X2X20	4 ± 0.20	2.00 ± 0.20	20.00 ± 0.5
5X2.5X20	5 ± 0.30	2.50 ± 0.30	20.00 ± 0.5
6X3X20	6 ± 0.30	3.00 ± 0.20	20.00 ± 0.5
7X3X20	7 ± 0.30	3.00 ± 0.20	20.00 ± 0.5
8X3X20	8 ± 0.30	3.00 ± 0.20	20.00 ± 0.5
10X5X20	10 ± 0.40	5.00 ± 0.30	20.00 ± 0.5



Mahindra Hinoday Industries Limited

Bhosari Industrial Estate, Pune - 411026, INDIA.

Telephone - 020 - 27120812

Fax - 020 - 27128592

Email - marketing@hinodaynet.com

Website - www.hinodaynet.com