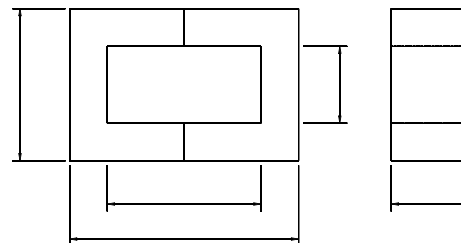


UU and UI Cores



Application of U Cores
 Pulse and High Voltage Transformer
 Line Deflection transformers
 Energy storage chokes
 common chokes
 Suppression for Line Filter



DIMENSIONS

Type	A(mm)	B(mm)	C(mm)	D(mm)	E (mm)
UU 10	10.00 ± 0.25	14.40 ± 0.4	3.00 +0.0/-0.4	4.30 + 0.4/-0.2	8.60 ± 0.6
UU 10.5	10.50 ± 0.25	15.80 ± 0.4	5.35 ± 0.25	5.30 + 0.4/-0.0	10.60 ± 0.3
UU 1414	14 ± 0.3	14.2 ± 0.3	2.7 ± 0.2	8.4 Ref	8.4 ± 0.4
UU 15	15.20 ± 0.7	23.4 +0/-1.20	6.70 +0/-0.5	5.20 ± 0.3	11.40 + 1.4/-0
UU 16	16.00 ± 0.7	21.20 ± 0.6	6.00 ± 0.25	7.00 ± 0.3	12.00 ± 0.7
UU 20	20.00 ± 0.3	36.00 ± 0.5	6.00 ± 0.2	8.00 ± 0.25	24.00 ± 0.5
UU 21	21.00 ± 0.6	31.60 +0/-1.20	7.50 ± 0.25	6.00 ± 0.4	16.60 + 1.0
UU 23	23.00 ± 0.6	32.00 +0/-1.20	7.55 ± 0.25	8.00 ± 0.2	16.50 + 1.0
UU 4628	46 ± 1	79 ± 0.5	28 ± 0.8	17.5 min	51 ± 1.0
UU 8025	80 ± 1.6	98 ± 1.0	20 ± 0.5	40 ± 0.8	58 ± 1.0
UU 93X16	93.00 ± 1.8	152.0 ± 1.0	16.0 ± 0.40	36.2 ± 1.20	96.00 ± 1.8
UU 93X30	93.00 ± 1.8	152.0 ± 1.0	30.0 ± 0.60	36.2 ± 1.2	96.00 ± 1.8
UU 101	101.6 ± 2.0	114.3 ± 0.8	25.4 ± 0.76	50.8 ± 1.0	63.50 ± 1.5
UU 126	126.00 ± 2.0	89.0 ± 1.0	20.0 ± 0.60	70.0 ± 1.0	62.00 Min
I 101X25.4	101.59 ± 2.00	25.4 ± 0.76	25.4 ± 0.76	---	---
I 93X30	93.00 ± 1.80	28.0 ± 0.50	30.0 ± 0.60	---	---
I 126	126.00 ± 2.00	27.5 ± 0.50	20.0 ± 0.60	---	---

EFFECTIVE PARAMETERS

Type	Wt	Le cm	Ae cm ²	Ve cm ³	AL±25%		
					MSB5S	MGQ5C	MSB7C
UU 10	1.4	3.48	0.086	0.30	---	720	---
UU 10.5	2.81	3.75	0.139	0.521	900	1000 min	---
UU 1414	480	0.4	1.6	42.4	7.6	322	1540
UU 15	8.70	4.80	0.320	1.536	1800	2058 min	---
UU 16	7.60	5.21	0.275	1.433	---	2175 min	---
UU 20	15.5	8.80	0.36	2.98	---	1700 min	---
UU 21	20.40	6.80	0.560	3.800	2450	2300 min	---
UU 23	22.40	7.40	0.610	4.514	2065	---	---
UU 4628	---	630	192.6	645	130450	---	7900
UU 8025	---	258	400 mm ²	103200	159.00	---	3000
UU 93X16	---	955.0	35.50	8.4	298	---	5300
UU 93X30	---	1050	30.84	6.452	198.965	---	5400
UU 101	---	1340.0	48.00	5.600	2.68.800	---	3050
UU 126	---	48.00	5.60	269	---	---	3000
I 101 x 25.4	---	24.5	6.45	158.00	---	---	6500
I 93x30	---	21	8.36	17.5	---	---	8500
I 126	---	35.4	5.6	198	---	---	3800